



YARD FORCE®

LAWN & GARDEN EQUIPMENT

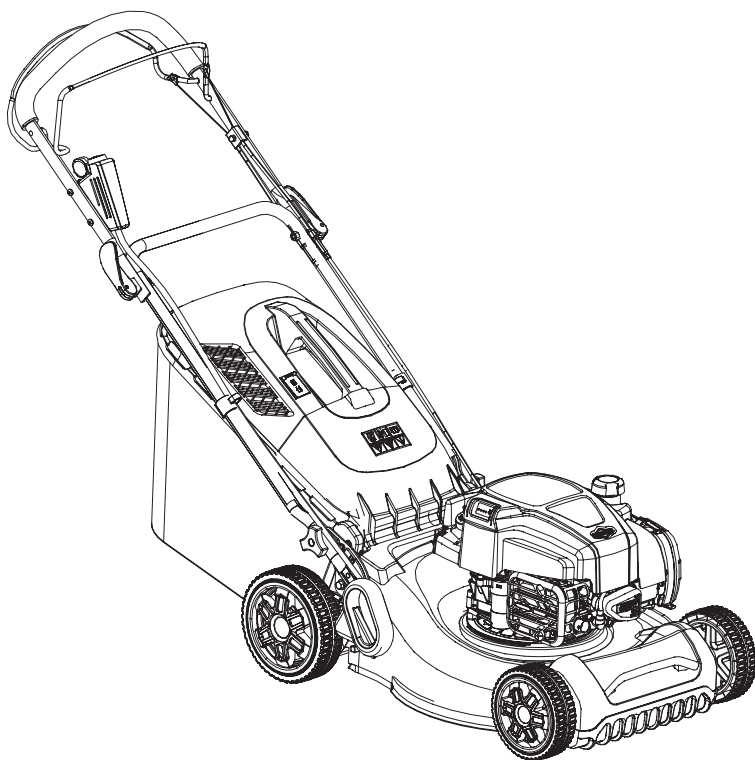
GM B46E

XSZ46G-E

GB

PETROL LAWNMOWER

Original Instructions



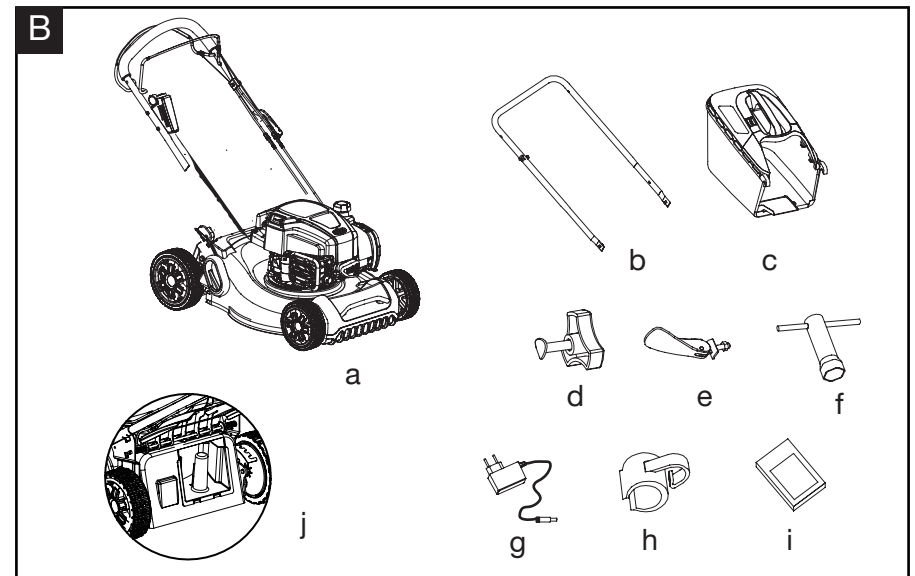
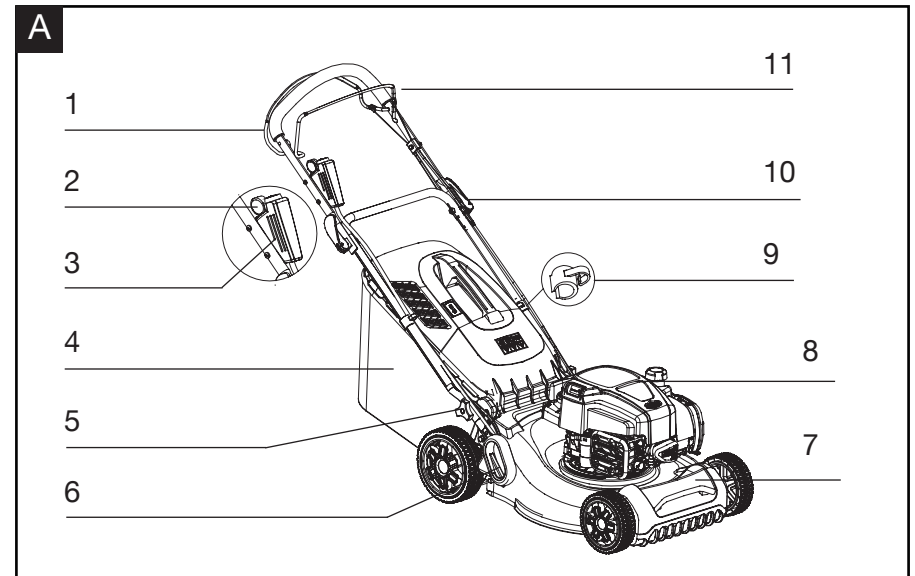
**READ & UNDERSTAND
INSTRUCTION MANUAL**

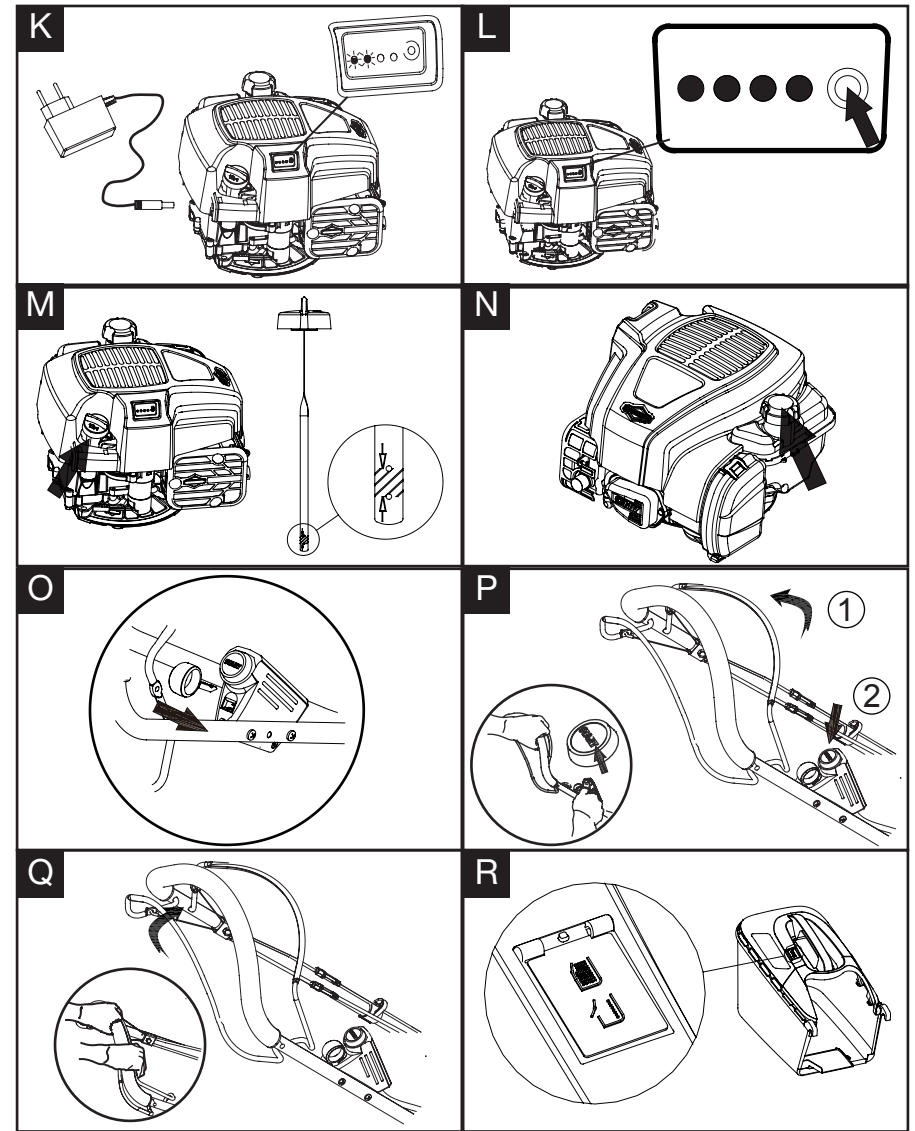
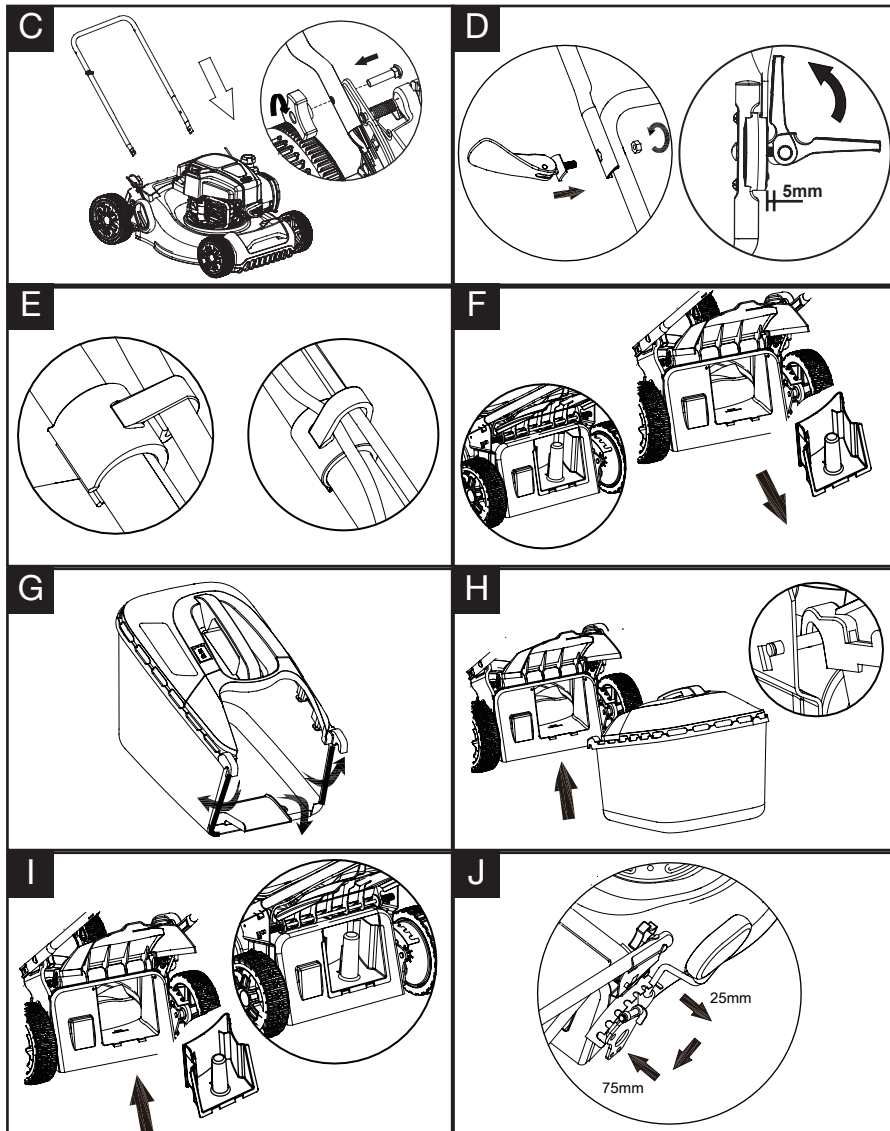


Save all warnings and instructions for future reference.



Read this manual carefully prior to assembling and operating the petrol lawnmower. It is dangerous to operate this product without being familiar with these instructions. Keep this manual in a safe place and have it ready for future reference.





YARD FORCE

GM B46E Original Instructions

CONTENT

Intended use	07
General safety warnings	07
Product safety warnings	10
Symbols	13
Technical data	16
Description of product	17
Installation	18
Operation	19
Maintenance and storage	22
Troubleshooting	25
CE declaration	26

INTENDED USE

This machine is intended only for mowing domestic lawns and grass. This machine is not suitable for commercial use. Commercial use will void the warranty of the product. Any use other than that outlined in these instructions may result in damage to the machine and risk serious injury to the user.

The machine is intended for use by adults. Children or other people who are unfamiliar with the operating instructions must not use the machine.

The operator or user is responsible for any accidents or damage to other persons or their property.

GENERAL SAFETY WARNINGS



WARNING: Read all safety warnings and instructions.

Failure to follow the warnings and instructions may result in electric shock, fire and/or serious injury.



WARNING! Read all safety warnings and instructions highlighted by the symbol. Save all warnings and instructions for future reference.

Always ensure anyone intending to operate this machine fully understands the contents of this instruction manual prior to assembling, maintaining or operating the machine.

Assemble the machine as described in this manual. Failure to observe this warning may lead to serious injury, death or damage to the machine.

Always take care when removing the packaging, to prevent damage to you or to the machine.

IMPORTANT! Before assembling the machine, check all the parts indicated in the manual are in the box. Inspect all the parts for signs of damage. Do not assemble the machine if you observe any damaged components.

GENERAL SAFETY WARNINGS

1. Keep this operating and maintenance manual in a safe place for reference at a later date.
2. Read the instructions carefully. Be familiar with the controls and the proper use of the equipment.
3. Never allow children or people unfamiliar with these instructions use the lawn mower. Local regulations can restrict the age of the operator.
4. Never mow while people, especially children or pets, are nearby. Keep in mind that the operator or user is responsible for accidents occurring to other people or their property.
5. This appliance is not intended for use by people (including children) with reduced physical, sensory or mental capabilities, or lack of experience and knowledge, unless they have been given supervision or instruction concerning the use of the appliance by a person responsible for their safety.
6. Never touch a rotating blade.
7. The operator or user is responsible for accidents or damage to other persons or their property.
8. Pay attention, be aware of what you are doing and take the utmost care when working. Do not use the device if you are tired or ill or you are under the influence of drugs, alcohol or other medication. A moment of inattention whilst using the device can result in serious injuries.

GENERAL SAFETY WARNINGS

Personal safety

While mowing, always wear suitable footwear and long trousers. Do not operate the equipment when barefoot or wearing open-toed sandals.

1. Thoroughly inspect the area where the equipment is to be used and remove all objects which can be thrown by the machine.
2. Petrol is highly flammable; store fuel in containers specifically designed for this purpose.
 - a) Refuel outdoors only and do not smoke while refuelling.
 - b) Add fuel before starting the engine. Never remove the cap of the fuel tank or add petrol while the engine is running, or when the engine is hot.
 - c) If petrol is spilled, do not attempt to start the engine and move the machine away from the area of spillage and avoid creating any source of ignition until petrol vapours have dissipated.
 - d) Replace all fuel tank and container caps securely.
3. Replace faulty silencers.
4. Prior to use, visually inspect to see that the blade, blade bolts and cutter assembly are not worn or damaged. Replace worn or damaged blades and bolts in sets, to preserve balance.
5. Before use, always check the electric starter battery. Never use a damaged battery.
6. Use only replacement parts and accessories supplied and recommended by the manufacturer. The use of parts from other manufacturers may result in injuries and will result in immediate invalidation of the warranty.

PRODUCT SAFETY WARNINGS

Operation safety

1. **Do not** operate the engine in a confined space where dangerous carbon monoxide fumes can collect.
2. **Mow only in daylight or in good artificial light.**
3. **Avoid operating the equipment on wet grass, where possible.**
4. **Always be sure of your footing on slopes.**
5. **Walk, never run.**
6. **Mow across the face of a slope, never up and down.**
7. **Exercise extreme caution when changing direction on slopes.**
8. **Do not** mow excessively steep slopes.
9. **Use extreme caution when reversing or pulling the lawnmower towards you.**
10. **Stop** the blade if the lawnmower has to be tilted for transportation, when crossing surfaces other than grass and when transporting the lawnmower to and from the area to be mowed.
11. **Never** operate the lawnmower with defective guards or without safety devices, for example deflectors and/or grass catchers, in place.
12. **Do not** overload the machine and do not try to alter the lawnmower's governor settings.
13. **Start the engine carefully according to the instructions and with feet well away from the blade.**
14. **Do not** tilt the lawnmower when starting the engine.
15. **Do not** put hands or feet near or under rotating parts. Keep clear of the discharge opening at all times.
16. Never pick up or carry a lawnmower while the engine is running.

PRODUCT SAFETY WARNINGS

17. Stop the engine and disconnect the spark plug cable, making sure that all moving parts have come to a complete stop:
 - a) Before clearing blockages or unclogging the chute.
 - b) Before checking, cleaning or working on the lawnmower.
18. After striking a foreign object, inspect the lawnmower for damage and make repairs before restarting and operating the lawnmower.
19. If the lawnmower starts to vibrate abnormally, check immediately.
20. Stop the engine and disconnect the spark plug wire, and make sure that all moving parts have come to a complete stop before refuelling.
21. Before starting the engine, check the electric starter battery capacity. Do not work with equipment that is damaged or incomplete or has been modified without the approval of the manufacturer.
22. Using machines for applications other than those intended may result in dangerous situations.
23. Do not work with the device if there is a risk of lightning.

Maintenance and storage

1. Keep all nuts, bolts and screws tight to be sure the equipment is in a safe working condition.
2. Never store the equipment with petrol in the tank inside a building where fumes can reach an open flame or spark.
3. Allow the engine to cool before storing in any enclosure.
4. To reduce the risk of fire, keep the engine, silencer, and

PRODUCT SAFETY WARNINGS

- petrol storage area free of grass, leaves, or excessive grease.
5. Check the grass collector frequently for wear or deterioration.
 6. For safety, always replace worn or damaged parts.
 7. If the fuel tank has to be drained, this should be done outdoors.
 8. Keep the electric starter battery and charger in a dry place out of reach of children. Fully charge the battery before long term storage.
 9. Handle your equipment with care. Keep the tools sharp and clean to ensure safe and efficient working conditions. Ensure to follow the maintenance instructions in this manual.
 10. Do not attempt to repair the equipment yourself unless you are trained to do so. Any work not specified in these instructions is to be carried out only by customer service centres authorised by Yard Force.
 11. Keep the equipment in a dry place and out of reach of children. Machines are dangerous if used by inexperienced people.

SYMBOLS

Safety symbols

The purpose of safety symbols is to attract your attention to possible dangers. The safety symbols and the explanations with them require your careful attention and full understanding. The symbol warnings do not, by themselves, eliminate any danger. The instructions and warnings they give are no substitutes for proper accident prevention measures.

WARNING: Be sure to read and understand all safety instructions in this operator's manual, including all safety alert symbols such as "**DANGER**," "**WARNING**," and "**CAUTION**" before using this tool. Failure to follow all instructions listed below may result in electric shock, fire and/or serious personal injury.

SAFETY ALERT SYMBOL: Indicates **DANGER**, **WARNING**, or **CAUTION**. May be used in conjunction with other symbols or pictographs.

Symbol meaning

This page depicts and describes safety symbols that may appear on this product. Read, understand and follow all instructions on the machine before attempting to assemble and operate.

SYMBOLS



Please read all of the safety and operating instructions carefully before using this machine.
Read the instruction manual before operating.



Keep bystanders away - especially children and pets.



Beware of sharp blades - remove the spark plug lead before maintenance



No naked flames.



Add engine oil.
Only refuel with unleaded petrol.



Hot surfaces will burn hands!



Warning! The lawnmower's exhaust gas contains toxic substances. Do not run the engine in closed or poorly-ventilated areas.

SYMBOLS



The blade continues to rotate for a period after the machine is switched off. Do not touch the blade until all the machine components have stopped completely.



The product complies with the applicable European directives, and an evaluation method of conformity for these directives was done.



Sound level data (96 dB), in accordance with Directive 2000/14/EC.







Batteries contain Li-ion. Do not dispose of waste batteries in domestic waste. Contact local authority to find out how to dispose of batteries.



WEEE symbol. Waste electrical products should not be disposed of with household waste. Please recycle where facilities exist. Check with your Local Authority or local store for recycling advice.

TECHNICAL DATA

Model		GM B46E
Engine type		B&S 09P7 (475ISi) Single cylinder 4-stroke
Engine displacement		140 cm ³
Engine power		2.1 kW
Max. engine speed		2900 rpm
Cutting width		46 cm
Grass bag capacity		55 l
Fuel tank capacity		0.8 l
Oil tank capacity		0.47 l
Measured sound power level		94.4 dB(A) K=3 dB(A)
Guaranteed sound power level		96 dB(A)
Vibration		6.11 m/s ² k=1.5m/s ²
Spark type		Champion XC92YC
Net weight		31 kg



WARNING: Depending on how the product is actually used, the vibration values can differ from the declared total! Adopt proper measures to protect yourself against vibration exposures. Take the whole work process, including times the product is running under no load or switched off, into consideration. Proper measures include, among others, regular maintenance and care of the product and its attachments, keeping hands warm, regular breaks and proper planning of work processes.

DESCRIPTION OF PRODUCT

Parts description (Fig. A)

1. Self-propelled switch lever
2. Safety key
3. Start control box
4. Grass collection bag
5. Fixing knob
6. Cutting height adjustment handle
7. Front carry handle
8. Engine
9. Cable clip
10. Handle fixing quick clamps
11. Stop/Start-lever

Delivery contents (Fig. B)

Carefully unpack the appliance and check that it is complete. Dispose of the packaging material correctly.

- a. Main mower deck (with upper handle attached)
- b. lower handle
- c. Grass collection bag
- d. Fixing knob
- e. Handle fixing quick clamps
- f. Spark plug wrench
- g. Engine battery pack charger
- h. Cable clip
- i. Instruction manual
- j. Mulching plug



WARNING: If any parts are damaged or missing, do not operate this tool until these parts are replaced. Failure to heed this warning could result in serious personal injury.



NOTE: Always recycle the packaging in accordance with local recycling guidelines.

INSTALLATION



WARNING: Always take care when removing the packaging, to prevent damage to you or to the lawnmower. This item requires a two-person lift to remove it from the packaging. Make sure that you have sufficient space to put the lawnmower down. Keep your feet apart so that you have a stable position; bend at the knees and keep your back straight. Always recycle the packaging in accordance with local recycling schemes.

Assemble the lower handle (Fig. C)

1. Remove the packaging from the handle. Set the height adjustment to the lowest position, and align the lower handle with the holes in the deck. Make sure the holes in the lower handle are aligned with those in the support. Fix the lower handle onto the deck firmly by using 2 fixing knob.

Assemble the upper handle (Fig. D)

Lift the upper handle and lock in place using the Handle fixing quick clamps and tensioning bolts. Ensure the lower and upper handles are firmly connected.

Attach cable clips (Fig. E)

Ensure that the cable clips supplied are used to fix the cable to the lower handle.

Assemble the grass bag

1. Attach the grass bag to the frame by fixing all the plastic hooks. (Fig. G)
2. If using the collection function, raise the safety flap and hook the collection bag onto the mower. (Fig. H)
3. Release the safety flap.

NOTE: Make sure the mulching plug is not in the rear chute of deck. (Fig. F)

If mowing with mulching (Fig. I)

When mulching, remove the collection grass bag, and put the plastic mulching plug into the rear discharge chute. Then release the flap, it will close back to cover the mulching plug.

NOTE: To ensure that the cut grass can be mulched efficiently, do not cut high or wet grass.

Setting the cutting height (Fig. J)



WARNING! The blade can cause serious injury. Before adjusting the mower height, stop the engine and wait for the mower blade to come to a complete stop.

1. Pull the lever outwards the wheel, then move it forward or backward to adjust the cutting height.
2. Move it to any one of the 7 positions for the desired cutting height.
3. Return the lever into the securing plate.

NOTE: Never use the lowest cutting height for the first cut of the season or in drought conditions. Only about one third of the grass height should be cut at this time.

OPERATION

NOTE: Before initial use, please read these operating instructions and the Briggs & Stratton instruction manual carefully in order to avoid incorrect handling.

Charging the battery



WARNING! Charge battery pack only with Briggs & Stratton battery charger

1. Connect the charger into the engine. the indicator will flashing during normal charging process. (Fig. K)
2. Charging a completely discharged battery will take approximately 4 hours. Leaving the charged battery in the charger will not significantly discharge the battery.
3. When not in use, disconnect battery charger from mains source.

Battery Capacity Indication

To check available charge, press the Battery capacity indication button. The display lights will indicate the approximate amount of capacity remaining in the battery pack. (Fig. L)

Filling with engine oil



IMPORTANT! The following procedures and adjustments must be performed before the engine is started. Do not attempt to make any of these adjustments while the engine is running.

This engine is shipped without oil or petrol, any oil residue is from testing prior to shipping. The engine must be filled with the correct grade of oil and petrol before starting the engine. Running the engine with a low oil level will cause irreparable engine damage. Always use high-quality detergent oil classified SAE 30 oil (or equivalent, e.g. 5W 30, often termed as 4-stroke lawnmower oil). Only use additives recommended by the engine manufacturer. To prolong the life of your engine, it is important that the oil is changed after the first 5 hours of use.

Check the engine oil level with the engine stopped and the mower on a level surface.

1. Remove the oil filler dipstick and wipe oil from it with a clean cloth.
2. Insert the dipstick into the oil filler neck, and screw it in.
3. Then remove the dipstick and check the oil level. The oil level must be between the min. and max. marks on the dipstick. If near the lower level, fill to the upper level with the recommended oil (SAE 30 or equivalent). Do not overfill. Wipe away any spilt oil. (Fig. M)
4. Before using for the first time add 0.47 litres of oil (SAE 30).

OPERATION

Filling with engine fuel (Fig. N)



WARNING!

Refuel in a well-ventilated area with the engine stopped. Do not smoke or allow flames or sparks in the area where the engine is refueled or where petrol is stored. Avoid repeated or prolonged contact with skin or inhalation of vapour.



CAUTION!

Petrol is highly flammable and extreme caution must be taken when handling or working with it. Keep out of reach of children.

1. Clean the area around the petrol filler cap before removing the cap. Check the fuel level.
2. Refill the tank if the fuel level is low.
3. Always use clean, fresh unleaded petrol and purchase fuel in quantities that can be used within 30 days.

Never mix oil with petrol.

To allow for expansion, carefully refuel and avoid overfilling or spillage. There should be no fuel in the filler neck.

Clean up any overflow or splashes of petrol before starting the engine.

Tighten the filler cap after filling, finger tight only.

Starting the engine



WARNING!

Do not operate the machine in enclosed or poorly-ventilated areas, as the exhaust gas contains toxic substances. Keep hands, feet, hair and clothing away from all the moving parts of the machine. The exhaust and other parts of the machine will become hot during use. Make sure that the blade is securely fastened before starting the engine.

NOTE! To start the engine, make sure that the spark plug cap is located on the plug and the machine is filled with sufficient oil and petrol.

1. Insert the Safety key

Insert the Safety key into the into the Start control box and make sure it is in position. **(Fig. O)**

2. Start/stop bar activation (Fig. P)

The new battery may be in sleep mode, recharge the battery for ten seconds to wake it up.

- 1) Pull the start/stop bar towards you.
- 2) Press and hold the **START** button. As soon as the motor starts running, release the button.

To stop, release stop/start bar

OPERATION

Failure to start

If the engine won't start after you have operated the starter several times, the engine may be flooded with excess fuel.

Use the following procedure to clean and start a flooded engine:

- A. Release the stop/start bar.
- B. Remove the spark plug, dry it and then reinstall it. Install the spark plug carefully by hand, to avoid cross-threading. After the plug is seated, tighten it 1/8 to 1/4 turns with the socket spanner to compress the washer.
- C. Pull the stop/start bar towards the upper handle.
- D. Press and hold the **START** button as described above.

Using the drive function (Fig. Q)

This unit is self-propelled.

1. Start the mower as previously mentioned.
2. Use one hand to hold the blade control bar firmly pressed against the main handle.
3. Use your free hand to press the drive control bar towards the main handle, and grip the main handle with both hands. The drive system will engage immediately.
4. Release the drive control bar to disengage the drive system. Releasing the blade control bar will stop the engine; this will also stop the drive system.

Mowing with collection bag



WARNING!

Always observe the strictest safety procedures when using the lawn mower. Start the engine and allow it to run.

Keep a firm grip on the upper handle and stop/start bar and walk along with it. Never run with the mower. Be very careful when mowing uneven or rough ground. Maintain a stable footing. Mow across slopes, never up and down. Be careful when changing the direction of the mower on a slope. Do not use the mower on a steep slope of more than 15°.

NOTE:

The best result will be achieved if the grass is dry. Wet grass will tend to clog the blade and the grass collection system.

Grass grows at different rates at different times of the year. Never use the lowest cutting height for the first cut of the season or in drought conditions. Only about one third of the grass height should be cut.

If the lawnmower will not collect the cuttings efficiently, the grass discharge chute may be blocked, the grass bag may be full or the underside of the mower deck may be clogged.

Emptying the grass collection bag

There is an indicator on the grass collection bag cover, it shows whether you need to emptying the grass bag. **(Fig. R)**

MAINTENANCE AND STORAGE

Storing the lawnmower for short periods

After mowing, please follow the actions below prior to placing the lawnmower in storage:

- Allow the engine to fully cool.
- Ensure the grass bag is empty.
- Clean all debris from under the mower deck.

Store the lawnmower on a flat and level surface, with all 4 wheels on the ground.

Store in a dry, safe place which is not accessible by children or people who are not familiar with operation.

Storing the lawnmower for extended periods



CAUTION! Do not empty the petrol tank in enclosed areas, near fire or when smoking. Petrol fumes can cause explosions and fire. Always carry the product on its gripping surfaces.

If the lawnmower is to be placed into storage at the end of the season or if the mower is not to be used for a period longer than 6 weeks, storage maintenance must be performed on the lawnmower.

Temperature fluctuations cause condensation, which contaminates fuel and causes starting problems. Simply emptying the machine of fuel will prevent this.

Empty the petrol tank with a petrol suction pump if available, or use the tipping method.

Start the engine and let it run until any remaining petrol has been used up.

Change the oil at the end of every season. To do so, remove the used engine oil from a warm engine and refill with fresh oil.

Remove the spark plug from the cylinder head. Fill the cylinder with approx. 20ml of oil from an oil can. Slowly pull back the starter handle, which will bathe the cylinder wall with oil and screw the spark plug back in.

Clean the cooling fins of the cylinder and the housing.

Be sure to clean the entire machine to protect the paint.

Store the machine in a well-ventilated place.

Maintenance schedule



WARNING!

Before you tip the lawnmower onto its side, completely empty the fuel tank using a petrol suction pump.

Never turn the mower upside down.

Before commencing any maintenance, always disconnect the spark plug.

Performing routine maintenance correctly on your lawnmower will ensure you get years of trouble-free use.

Please keep this manual safe for future reference.

It is recommended that the following maintenance schedule is adhered to. This will ensure the lawnmower operates correctly and is safe to use.

MAINTENANCE AND STORAGE

	After every use	After 12 hours use	After 24 hours use	After 36 hours use
Cleaning	Clean	clean	clean	clean
Air filter	/	clean	clean	clean
Spark plug	/	check	check	check
Engine oil	check	check	check	check
Cutting blade	check	check	check	check

Cleaning

1. To ensure long life and good performance of the machine, it is important to keep the machine clean and well lubricated. Make sure the chute is clean and under the deck is cleared from wet debris. (See also short term storage).
2. Do not allow grass cuttings and other debris to become dry and hard on any of the mower surfaces, as this will directly affect the cutting and grass collection performance. Make sure that the underside of the lawnmower deck is clean and clear.
3. Never clean the lawnmower with a water jet or high-pressure cleaner. The engine must remain dry. Do not use aggressive cleaning agents or solvents, such as cold degreasers or petroleum ether.

Cleaning or replacing the air filter



WARNING!

Never run the engine without the air filter element installed:

1. Loosen the fastener that holds the cover.
2. Open the cover and remove the filter.
3. To loosen debris, gently tap the filter on a hard surface. If the filter is excessively dirty, replace with a new filter.
4. Install the filter.
5. Install the cover tabs into the slots.
6. Close the cover and secure with the fastener.

Cleaning or replacing the spark plug

1. Once the engine has cooled, pull off the spark plug boot with a twist. Remove the spark plug using the socket spanner supplied.
2. Clean the plug with a wire brush.
3. Using a feeler gauge, set the gap to 0.51mm.
4. Install the spark plug carefully by hand to avoid cross-threading.
5. After the spark plug is seated, tighten with the spanner to compress the washer.

Changing the oil

1. Tilt the lawnmower towards the oil filler, have a container ready to catch the oil and remove the dipstick. Once the oil has been emptied, wipe clean any spillages.
2. Refill with 470ml SAE 30 oil or equivalent, i.e. SAE 5W/30, SAE 10W/30. When the dipstick is rested on the filler pipe, the oil level must be between the min. and max. marks on the dipstick.
3. See 'Filling with engine oil'. Do not overfill.

MAINTENANCE AND STORAGE

- Start the engine and allow it to run briefly.
- Stop the engine, wait one minute and check the oil level. Top up if necessary.

Replacing the cutting blade



WARNING! USE GLOVES.

Before you remove the grass collection bag, stop the engine and wait until the blade comes to a complete standstill.

You will need garden gloves (not provided) and a spanner wrench to remove the blade. Always handle the blade with care - sharp edges could cause injury. Don't hold the blade directly by hand.

Renew your metal blade after 50 hours of mowing or after 2 years, whichever comes first, regardless of condition.

Regularly check your blade. If the cut of your grass is poor, the blade might be blunt. Damaged blades not only result in a bad cut, they cause excessive vibration and uneconomical running of the engine. If the blade has worn excessively and become pitted and blunt, it should be replaced or sharpened.

- Tip the machine slightly towards the oil filler pipe and reach under the deck.
- Hold the blade and unscrew the blade bolt counterclockwise using a spanner wrench. Remove the washer and the blade.
- Inspect the blade adaptor for any signs of damage.
- Fit a new blade, locate the blade on the two studs on the blade flange and then replace the washer and bolts.

Check the washer is still slightly domed to keep the pressure on the bolt to stop it unwinding, keeping the blade firmly secure. Then replace the washer (right way round!) and bolts. Make sure the blade is the right position, and then firmly tighten the bolt. Do not over tighten. The up turn of the blade must project into the motor compartment.

Disposal

- Return the tool, accessories and packaging to a recycling centre when you have finished with them.
- Carefully drain the petrol and oil tanks and take your equipment to a recycling centre. The plastic and metal parts that are used can be separated by type and thus recycled.
- Take used oil and petrol residues to a disposal point. Do not pour them into the sewer system or down the drain.
- Ask our service centre for details.
- Defective units returned to us will be disposed of for free.
- Do not throw cut grass in the dustbin but rather compost it or spread it under bushes and trees as a mulch layer.
- Battery chemicals are toxic and corrosive. Never burn or incinerate discarded or used battery packs as they may explode.
- Used and discarded battery packs will likely still carry a small electrical charge and should be handled with care. Always dispose of discarded or used battery packs according to local regulations.

TROUBLESHOOTING

Fault	Possible cause	Solution
Engine does not start	Too little petrol in the tank	Fill with petrol
	Electric starter battery is empty	Charge the battery
	Incorrect starting sequence	Follow the instructions for starting the engine
	Spark plug cable not attached correctly to the spark plug	Attach the spark plug connector Clean, adjust or replace the spark plug
	Incorrectly adjusted carburetor mix	Have the carburettor adjusted by a specialist workshop
Engine starts but equipment does not run at full power	Dirty air filter	Replace the air filter
Engine splutters, stops	Does not make sense	Clean, adjust or replace the spark plugs
Engine overheats	Ventilation holes blocked	Clean the ventilation slot
	Incorrect spark plug	Change the spark plug
	Too little engine oil in the engine	Pour out some engine oil
Engine smokes	Dirty air filter	Replace the air filter
	Too much engine oil in the engine	Fill with engine oil
Output unsatisfactory	Grass too short or too long	Change the cutting height
	Blade is not sharp enough	Have the blade sharpened or replaced by a specialist workshop
	Blade blocked with grass, grass collection box full, ejection channel blocked	Remove the grass
Abnormal noises, rattling or vibrations	Blade not installed correctly	Have the blade installed by a specialist workshop
	Blade damaged	

CE DECLARATION

To the provisions of Council Directives

We

SUMEC France Sarl
59 bis Rue du Mûrier
37540 Saint Cyr Sur Loire, France

Declare that the product:

Description: PETROL LAWNMOWER
Model No. GM B46E/ XSZ46G-E
Function: Cutting grass

Complies with the essential health and safety requirements of the following directives:

Machinery Directive 2006/42/EC
Electromagnetic Compatibility Directive 2014/30/EU
Noise Emission in the Environment by Equipment for Use Outdoors Directive 2000/14/EC amended by 2005/88/EC
Directive 2011/65/EU as amendment by Directive (EU)2015/863
The Regulation of Non-Road Mobile Machinery Emissions (EU) 2016/1628 and its supplemented regulations
Conformity Assessment Procedure as Per Annex VI
Measured Sound Power Level: 94.4 dB (A)
Declared Guaranteed Sound Power Level: 96 dB (A)
Relative Notified Body (NB no 0865):
ISET S.r.l. Via Donatori del Sangue, 946024 - Moglia (MN)
Italy

Standards and technical specification referred to:
EN ISO 5395-1:2013+A1: 2018
EN ISO 5395-2:2013+A1:2016+A2:2017
EN ISO 14982:2009

Authorized Signatory
Date: 30.10.2020

Signature: 
Place: Saint Cyr Sur Loire
Name: Rodolphe Dubois
General Manager

SUMEC France Sarl
59 bis Rue du Mûrier
37540 Saint Cyr Sur Loire, France



CE DECLARATION

To the provisions of Council Directives

We

MEROTEC GmbH
Otto-Brenner-Str. 8
47877 Willich, Germany

Declare that the product:


Description: PETROL LAWNMOWER
Model No. GM B46E/ XSZ46G-E
Function: Cutting grass

Complies with the essential health and safety requirements of the following directives:

Machinery Directive 2006/42/EC
Electromagnetic Compatibility Directive 2014/30/EU
Noise Emission in the Environment by Equipment for Use Outdoors Directive 2000/14/EC amended by 2005/88/EC
Directive 2011/65/EU as amendment by Directive (EU)2015/863
The Regulation of Non-Road Mobile Machinery Emissions (EU) 2016/1628 and its supplemented regulations
Conformity Assessment Procedure as Per Annex VI
Measured Sound Power Level: 94.4 dB (A)
Declared Guaranteed Sound Power Level: 96 dB (A)
Relative Notified Body (NB no 0865):
ISET S.r.l. Via Donatori del Sangue, 946024 - Moglia (MN)
Italy

Standards and technical specification referred to:
EN ISO 5395-1:2013+A1: 2018
EN ISO 5395-2:2013+A1:2016+A2:2017
EN ISO 14982:2009

Authorized Signatory
Date: 30.10.2020

Signature: 
Place: Willich
Name: Roland Menken
General Manager

MEROTEC GmbH
Otto-Brenner-Str. 8
47877 Willich, Germany



CE DECLARATION

To the provisions of Council Directives

We

SUMEC UK

Unit A&B Escrick Business Park Escrick, York YO19 FD6

United Kingdom

Declare that the product:

Description: PETROL LAWNMOWER

Model No. GM B46E/ XSZ46G-E

Function: Cutting grass

Complies with the essential health and safety requirements of the following directives:

Machinery Directive 2006/42/EC

Electromagnetic Compatibility Directive 2014/30/EU

Noise Emission in the Environment by Equipment for Use Outdoors Directive 2000/14/EC amended by 2005/88/EC

Directive 2011/65/EU as amendment by Directive (EU)2015/863

The Regulation of Non-Road Mobile Machinery Emissions (EU) 2016/1628 and its supplemented regulations

Conformity Assessment Procedure as Per Annex VI

Measured Sound Power Level: 94.4 dB (A)

Declared Guaranteed Sound Power Level: 96 dB (A)

Relative Notified Body (NB no 0865):

ISSET S.r.l. Via Donatori del Sangue, 946024 - Moglia (MN)

Italy

Standards and technical specification referred to:

EN ISO 5395-1:2013+A1: 2018

EN ISO 5395-2:2013+A1:2016+A2:2017

EN ISO 14982:2009

Authorized Signatory

Date: 30.10.2020

Signature: _____



Place: York

Name: Mariana Hall

General Manager



SUMEC UK

Unit A&B Escrick Business Park Escrick, York YO19 FD6

United Kingdom