

GARDEN

INSPIRATION 2020



84 pages full of pleasure design

TRENDS GARDEN FURNITURE 2020

What are you going to see
definitely next season?

HOT STUFF

The must haves to brighten up
your garden or balcony

THE JOURNEY OF AN APPLE BEE

From tree to warehouse ... and
eventually your garden!

APPLE BEE
OUTDOOR FURNITURE - GARDEN INSPIRATION

INDEX



18

GARDEN FURNITURE TRENDS 2020

Wickerwork, rope, outstanding colours ...
What should you have in your garden in 2020?



80

FREQUENTLY ASKED QUESTIONS

Our answers to frequently asked questions about
garden furniture, materials, maintenance etc.

INTRODUCTION "Fancy"	3
ABOUT APPLE BEE Apple who? Apple Bee!	6
DID YOU KNOW? Facts and numbers about Apple Bee you have always wanted to know.	10
WORD SEARCH Crack the old pate!	13
APPLE BEE OVER THE YEARS Nostalgia with Apple Bee. What did your garden look like in 1999?	14
THE JOURNEY OF AN APPLE BEE From tree to warehouse: what does the journey of your furniture look like?	38
TRY THIS! The Apple Bee-cocktail for Friday afternoon drinks in the garden	42
MATERIALS Explanation of the quality materials used by Apple Bee	46
HOT STUFF 5x must haves to brighten up your garden or balcony	68
WHY BEE WETT®? Everything you want to know about our weatherproof cushions	69
COOLING OFF IN THE GARDEN A delicious, healthy recipe to enjoy on a summer day	74
A SUSTAINABLE CHOICE Two collections made entirely from leftover teak branches	76

"FANCY"

What do we fancy and what not? Often it is the subtle differences to determine this. Sometimes it is a colour that is appealing to us, or a shape, and usually it is a combination of both. Often it is the details that make a product attractive to us.

Last spring I joined my son in looking for new trainers. I thought that we had found a pair that exactly matched his wishes, but he thought quite different about it. "Then why don't you like these trainers?", I asked him. "They are your favourite brand and it is the colour you were looking for, so what is wrong with them?". He replied in a typically adolescent way: "I just don't like them". So, we looked further trying to find **"great"** trainers. In the next shop, he came to me, presenting a suitable pair and I was quite surprised, because in my opinion they were exactly the same as the pair we had seen earlier and I asked him what made him like these. My son totally disagreed; these looked much better! I was gobsmacked ... I was pretty certain that they were the same trainers and I asked why he preferred these. "Because they have straight laces", he replied. Apparently, the shopkeeper had parallelly laced round shoelaces in the shoe. In the previous sneaker store, flat laces had been laced transversely in the shoe. A subtle different that was seemingly irrelevant, but meant a significant difference to my 15 year-old son. The "straight laces" made the shoes great and worth buying!

Why am I telling you this story? Firstly, it illustrates that often details determine the beauty of a product. I too usually add subtle details to my designs that enhance the furniture and increase the attractiveness. Hoping that you, just as my son, will get a good feeling by what you are observing. For instance, the wooden detail that keeps the back cushion of the new Mix & Match collection in place. Or the bead that is part of the new Menton collection. In both cases, it is a subtle difference that would largely affect the general image when omitted. Secondly, this trainer story inspired me to initiate our new La Croix collection. This teak collection is not "just" interwoven using rope, but using "straight round laces". The rope was intentionally woven through the frame; just as the shoe laces that were laced parallelly. It is this subtle detail that makes the La Croix so attractive. And, in my opinion, exactly that is the power of Apple Bee. Accessible design that distinguishes by carefully applied subtle details that elevate the product from **"just nice"** to a balanced **"marvellous"**.

Therefore, I invite you to also take a look at the collections in our new magazine and pay special attention to the details. I think you will agree that it is specifically these details that make the furniture appealing to you.

I hope you will enjoy reading!

Sunny greetings,

Sako Wijma



MENTON LOUNGE BLACK



APPLE WHO? APPLE BEE!

HISTORY

Sako and Tineke have been passionate about garden furniture since they were young. Unsurprising, considering the fact that their father worked in the furniture sector all his life. With this in mind, brother and sister joined forces in 1993, founding Double You Meubelcollectie BV together. Here they quickly broke through with an innovation. They produced a high-quality stacking chair made from a weather resistant aluminum frame. This frame was braided with synthetic wickerwork, which meant that the lifespan of the furniture was enormously extended. In 1998 Tineke and Sako they officially switched to focusing on the production of their own outdoor furniture brand. From that moment on the garden furniture brand with a unique design was born in the Netherlands.



ENGAGED BRAND

Quality, innovative designs, excellent comfort and durability are criteria that we consider important. We have a strong focus on innovation and development. In addition, we attach value to paying attention to the conditions under which our furniture is being manufactured. From design to end product, we will be involved in the process. Daily contact with the production locations in Asia allows us to quickly respond to various developments, wishes and needs.



THE BUZZZZZ OF APPLE BEE

Our outdoor furniture is purely 'Dutch design'. Sako Wijma personally designs all collections. Every year he manages to surprise us with the new collections, suitable for any style and any garden. Dutch design is HOT! Thus, the Apple Bee collections do not remain unnoticed outside our own little country and are internationally famous. So it is likely that you will encounter an Apple Bee during your holiday at the other side of the world!

IN-HOUSE PRODUCTION

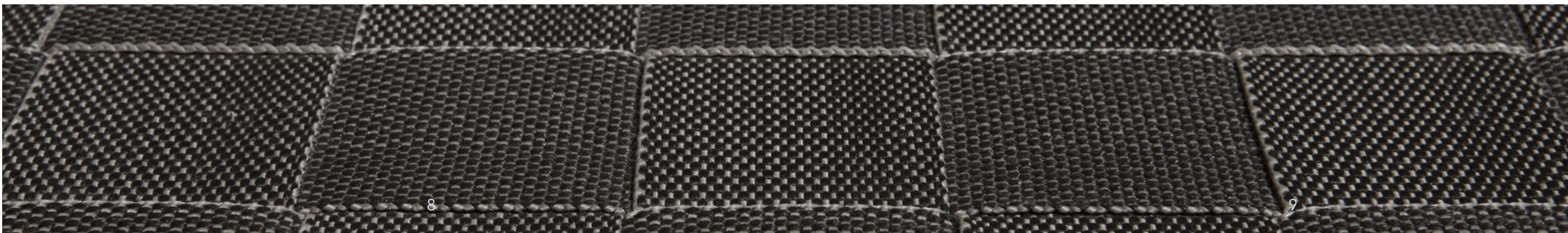
We are always committed to using the best materials in combination with timeless design. The wickerwork we apply is produced by ourselves and is exclusively available under the brand name Biculair®. Also the aluminium we use is produced by ourselves. This in-house production makes us independent of suppliers. As such, we can rely on our quality and are able to quickly respond to new developments and designs!



PLEASURE DESIGN

At Apple Bee, we consider ourselves not to be 'just' another outdoor furniture-supplier. On the contrary, we offer **leisure**! We wish to provide a happy feeling for as long as possible during this leisure. And, according to us, this can only be done using innovative quality products that were made using honest materials with a long lifespan. Pleasure, leisure ... Apple Bee design is pure 'pleasure'.





DID YOU KNOW ...

*the height and diameter of teak trees is strongly dependent on the habitat and soil?
For instance, the teak trees in Myanmar will grow 40-45 metres high and are some 2 metres in diameter, under favourable circumstances. Whereas the teak trees in Java grow approximately 20-30 metres high, with a diameter of 50 to 90 centimetres.*

Apple Bee is a **Dutch** outdoor furniture brand, that represents **exclusive design** and **high quality**?

our **Palm Bay** lounge set consists of:

1 three-seater sofa, **2** lounge chairs, **3** side tables,
170 metres of aluminium tubes, **900 metres** of wickerwork,
31.500 cm³ water permeable foam and **18 days** of labour for **1 person**?

*untreated teakwood outdoor furniture will gray over time?
In order to prevent this, you can treat it twice per year
using **Apple Bee** maintenance products?*

aluminium is a very durable material?

It's **100% recyclable** without loss of quality.

Around **75%** of all aluminium ever produced, is still in circulation.

you can even buy **Apple Bee** garden furniture in Australia?
The distance from this dealer to our office in Dongen
is **16.684 kilometer**!

nowadays there are **hybrid** teak trees?

*These are trees with **2 or 3 root systems**,
which make them grow **2 to 3 times** as fast!*

the tallest teak tree ever grew 45 metres high
and had a diameter of 3 metres (!!!)

currently the largest teak tree is 'only'

8 metres high with a diameter of **120 - 130 cm**?

This would allow us to produce about

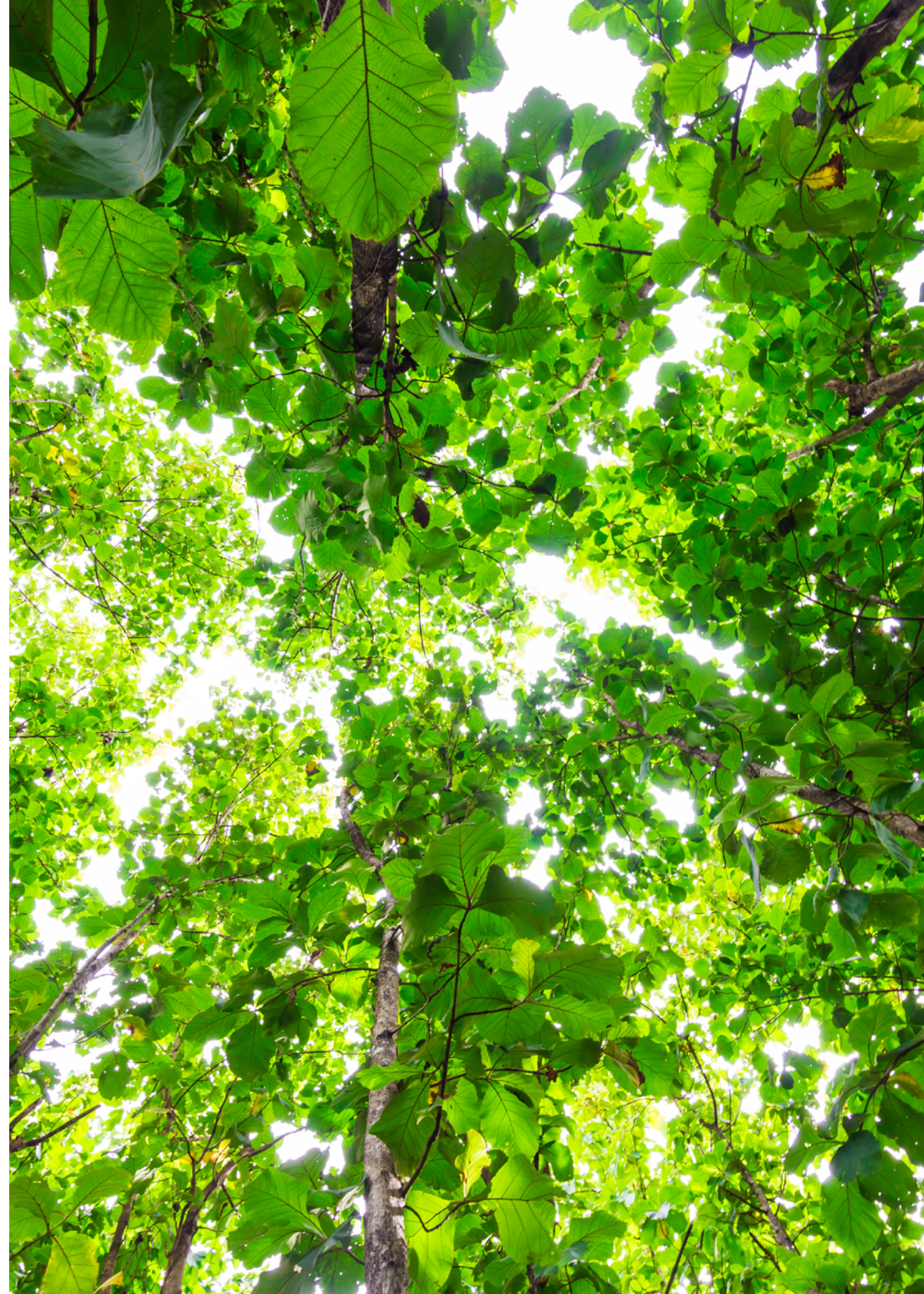
20 - 25 Long Island lounge sets

Apple Bee has been producing its **own wickerwork Biculair®**
for years? This special, durable wickerwork is
weather-resistant, colourfast, recyclable and eco-friendly.

the teak tree grows in with an

average rain fall of **1.250 to 1.650 mm**?

That is more than **twice** as much as the average Europe!





COCOON LOUNGE

While you are lounging nicely in your Apple Bee, we will make you ponder!
 Find the correct words in the word search game and get the solution.
 Share your solution via Instagram or Facebook, using the hashtag
[#applebeewordsearch](#)

A	M	U	N	I	M	U	L	A	F	P	E	N	P	L	S
S	N	O	I	H	S	U	C	L	O	P	E	E	E	N	D
D	G	S	B	A	I	S	E	N	O	D	N	I	O	E	C
N	I	O	U	T	D	O	O	R	R	E	S	I	B	O	N
E	S	E	D	S	E	E	S	A	P	U	T	Y	M	O	O
R	E	I	G	T	T	N	G	I	R	C	A	F	I	T	I
T	D	S	N	N	A	A	P	E	E	D	O	T	T	Y	T
U	E	T	O	E	B	R	I	L	H	R	A	E	E	T	C
D	R	E	I	M	L	E	L	N	T	X	W	N	R	I	U
O	U	S	T	N	E	O	P	A	A	E	L	J	R	L	D
O	T	E	A	O	C	E	B	L	E	B	I	O	A	A	O
W	I	G	V	R	S	L	E	B	W	U	I	Y	C	U	R
K	N	N	O	I	E	R	E	M	M	U	S	L	E	Q	P
A	R	U	N	V	K	R	O	W	R	E	K	C	I	W	R
E	U	O	N	N	E	X	C	L	U	S	I	V	E	T	E
T	F	L	I	E	G	N	I	N	I	D	U	T	C	H	Y

- ALUMINUM
 BEEWETT
 COLLECTIONS
 COMFORTABLE
 CUSHIONS
 DAYBED
 DESIGN
- DINING
 DUTCH
 ENJOY
 ENVIRONMENT
 EXCLUSIVE
 FURNITURE
 GARDEN
- INDONESIA
 INNOVATION
 LEISURE
 LOUNGESET
 OUTDOOR
 PRODUCTION
 QUALITY
- RELAXATION
 ROPE
 SIDETABLE
 SUMMER
 SUSTAINABILITY
 TEAKWOOD
 TERRACE
- TRENDS
 WEATHERPROOF
 WICKERWORK

Solution:

NOSTALGIA WITH APPLE BEE

Just as the fashion, in terms of clothing, significantly changes over the years, this also goes for outdoor furniture! Perhaps you didn't really notice, but actually a lot has changed. For that reason, we have made an overview of the collections of the last few years. Perhaps you will recognise an item that you used to have in your own garden?



1998



2007



2010



2003



2012



2017



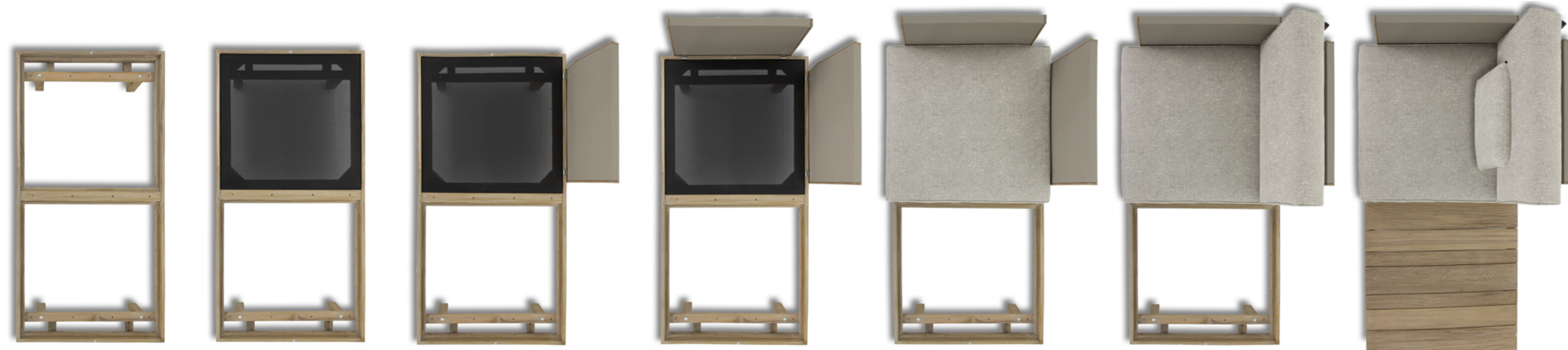
2019



2014



BUILD IT YOURSELF



MODULE-X COASTAL



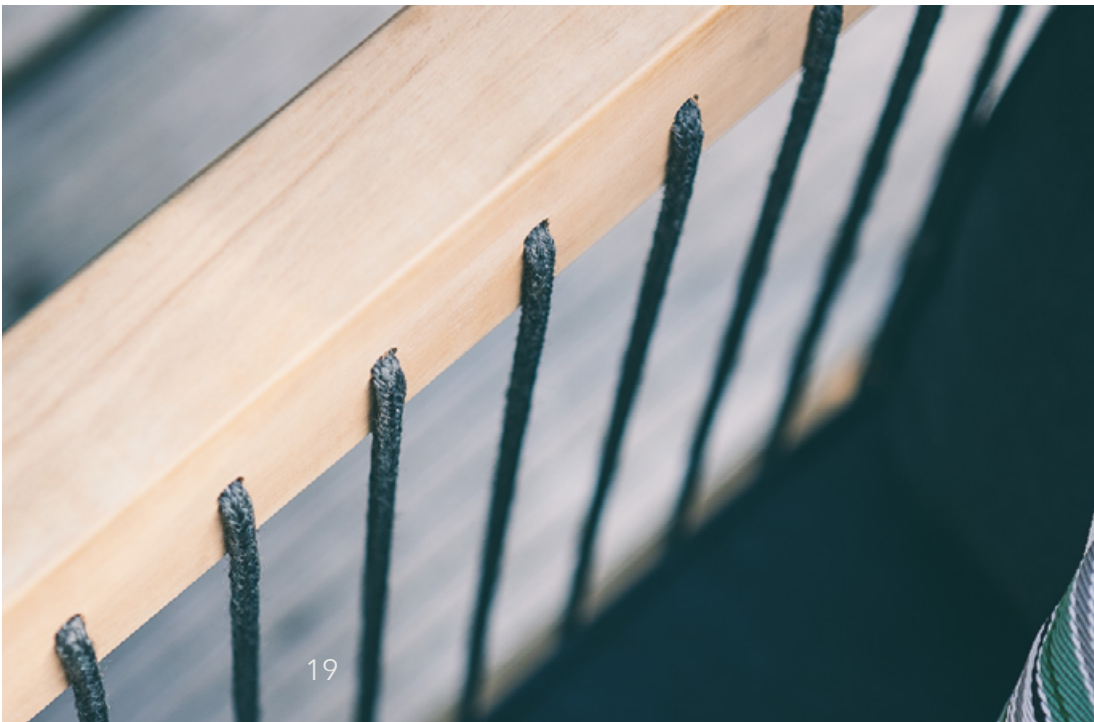
HIP & HAPPENING IN 2020

A new garden season has started, which means also new trends!
Are you ready yet for the new season? Get inspired by this trend overview.

ROPE

Rope will be a natural part of the season to come. The rope is processed in seats, sofas and even in tables. It is not just attractive, but also quite practical. Rope used for outdoor furniture by Apple Bee is made of olefin fibre, which was developed specifically for outdoor use. It is a remarkably strong, maintenance-friendly and even durable material. In addition, the Apple Bee rope is UV-resistant and will therefore not fade in direct sunlight.

LA CROIX LOUNGE



LA CROIX DINING





CRETE COFFEE TABLE



WICKER 3.0

Even larger, more robust and, also worth mentioning: even more modern. Wicker 3.0 uses even larger wickerwork than before. This doesn't make the wicker technique any easier. Craftsmanship is required to be able to process this material. At Apple Bee we attach a lot of value to this. Only the top wicker workers are able to do this. To give you an idea: a Cocoon lounge chair requires 26 hours of wicker work for a qualified professional!

ELEMENTS XL BLACK WASH





SOUL COFFEE TABLE





DARK COLOURS

On sunny days you tend to think about light colours, but also give thought to the dark ones. Dull? Not at all! Dark colours might even ensure a sturdy, industrial and luxurious style in your garden. Additionally, dark colours emphasize the green in your garden, providing a stage for each individual plant!

XXL FACTOR LOUNGE



MILOU BAR



MODULAR SETS

At Apple Bee, we wish to ensure that everyone can enjoy a lounge set. No matter the size of your balcony, patio or veranda. In 2020, this is executed by means of modular lounge sets. These sets can be composed entirely as desired. You can, for instance, create a seating area for two, but also for 10 or even 20 people. The possibilities are limitless and there will always be a suitable set available for your garden!

DREAMER LOUNGE





32



33

**PEBBLE BEACH
FOREST GREEN**



SPHERE

We want to create more and more atmosphere in our garden. We do this using beautiful plants, but also accessories have become increasingly more loved. Take a look at a coffee table set of different heights; this will provide your lounge set with a whimsical effect. But also cushions, preferably in as many different sizes and designs as possible, will embellish your set!

**DURABLE AND SOCIALLY RESPONSIBLE
GARDEN FURNITURE**

Environment and durability are becoming increasingly more important, also with regard to the purchase of outdoor furniture. And that is where Apple Bee comes in! All our furniture is made of high-quality materials with quality marks, like the FSC-certificate and the SVLK-quality label. But also the materials have a long lifespan, ensuring that you are making a sustainable choice.

Thus, you will be mindful of the environment as well as for the people!



MILOU LOUNGE



Pictures above by [@pascaledelong](#)

OLIVE LOUNGE



FROM TREE TO WAREHOUSE

Each decision made by us, regarding the way in which our outdoor furniture will end up in your garden, will have consequences for the local community that produces them, as well as for the environment. For that reason, it is a good idea to briefly consider the origin of our outdoor furniture. Reading this article, you will learn more about the entire process from tree to warehouse!



TEAK PLANTATION IN INDONESIA

Of course, the teakwood we use in our outdoor furniture, must grow first. This does not take place in primeval forests, but at teak plantations that are sustainably managed by the governmental forest management of Indonesia.

During the first **25 years**, the teakwood will grow rapidly, but it will be harvested only after **35-40 years**. Teakwood that is too young, will be too soft and not quite ready for good quality furniture.



CUT DOWN TEAK TREES

Of the wood suitable for production, the government will allocate just a part to be sold. This quota will be distributed among interested buyers and subsequently harvested for them.

Thus, this process is regulated and controlled entirely by the government. The entire process of allocating and harvesting takes about **3 to 4 months**.



ACCELERATING THE DRYING PROCESS

Now we can start producing the furniture. The furniture must be assembled, sanded, coloured and eventually packed. The furniture will be ready after about **45 to 60 days**.



THE TEAK IS DRY AND SANDED: READY FOR PRODUCTION!

Our furniture is now ready for transport. It will be taken to our dealer or to our warehouse in Dongen, by ship and lorry. The travel time of the furniture obviously differs depending on the destination. To give an example: the trip to Australia will take approximately **14 days**, whereas the journey to Dongen will take about **35 days**.

Then, finally you will be able to marvel at the furniture at one of our dealers. And then let's see how quickly it can be in your garden, because that, of course is the ultimate destination!



THE FURNITURE IS SHIPPED PER CONTAINER



The cocktail Daiquiri is a classic. The drink originates from British seamen. They produced the predecessor of this cocktail from their ration, consisting of rum, water, lime and sugar. Nowadays, the Daiquiri is known as a stylish and elegant choice. It is a simple cocktail, that you can combine entirely as you please. This is what we did at Apple Bee, creating our own Apple Bee Daiquiri. And whether during spring, summer, autumn or winter.... This cocktail will always be tasty!

INGREDIENTS

For 2 Apple Bee Daiquiri cocktails

2 organic limes

1 tablespoon of granulated sugar

150ml white rum

200ml organic apple juice

ice cubes

cinnamon sticks (garnish)

green apple (garnish)



HOW TO?

Squeeze out the limes. Put the juice, together with the sugar in the cocktail shaker (or a high beaker with lid) and shake until the sugar has dissolved. Add the white rum, the apple juice and ice cubes and shake for about 30 seconds. Then distribute it among the glasses and decorate each glass with a cinnamon stick and a piece of apple.

And then of course comes the most important ... Enjoying it in your garden!



Tip: rather not use alcohol? Then replace the white rum by 200ml of bitter lemon.

LOMBOK + FLEUR DINING



MATERIALS

We use different materials within the Apple Bee collections. These materials were selected on the basis of quality, durability, user-friendliness, weather-resistance and ease of maintenance. Read more about the different materials and their properties here and thus find out which material best suits you and your garden!

TEAK

Teakwood is a tropical hardwood with a beautiful warm brown colour that will naturally develop into silver-grey patina over time. Depending on the environment and weather influences, this process may show even after a few weeks. This will mainly occur in a somewhat wetter climate. In a dryer climate this weathering may take up to several months.

Originally, the wood type comes from South-East Asia. Yet today, the teak tree (*tectona grandis*) is planted in the tropics on a large scale. This results in significant differences in colour, weight, hardness, etc. The best quality teakwood is found in the east of Java, where the golden brown, flamed hardwood is also known as 'djati'.



LUC LOUNGE

The lifespan of teak is a lot lengthier than that of other wood types. Teakwood is more weather-resistant because of its higher content of oils that serve as a natural protection layer. This is what makes teak so suitable for outdoor furniture.

The teakwood we use at Apple Bee, derives from the plantation woods, sustainably regulated and controlled by the governmental forest management of Indonesia. This wood is given an SVLK-quality label. This certification shows that it complies with the set requirements with regard to the environment, nature and social conditions.

! Did you know that teakwood was also used in the 'Golden Coach', made in 1901 for the Dutch Royal Family?





FRÉJUS LOUNGE & DINING





WICKER

Wicker is the English naming for certain types of wickerwork. Even in the old days, many baskets and other utility articles in the Netherlands were already braided, using reed that was cut at the waterfront. In the beginning of the 20th century people also started to use it for the production of furniture. The peel of the reed would be removed to give it a more uniform colour and to make it possible to be stained into nice colours. In order to be able to meet the demand, they started importing rattan from Asia. Rattan is still widely used for indoor furniture, but it is less suitable for outdoors. For that reason, nowadays weather-resistant wicker is being used for this.

The collective name wicker has 2 different sub-types:

- HDPE - high density poly ethylene: these are the most expensive threads, but also have the best quality. It has the highest tensile strength, as a result of which it can deal with the largest tension. The seat of your furniture will, as such, never simply sag. It is typical that the thread will look like new for a very long time. This is the most durable choice.
- LDPE - low density poly ethylene: this is a cheaper thread, with a lower tensile strength. It can, as such, only handle a much lower tension, as a result of which, for instance, a seat may easily sag. Each year, the thread loses a bit of its strength it also it becomes less attractive over time.

At Apple Bee, we use our own Biculair® wickerwork. This is an HDPE-thread that is weather-resistant, colourfast, recyclable and eco-friendly. The thread is braided around an aluminium frame, ensuring that the outdoor furniture has a very solid construction. We apply different wickerwork thicknesses and colours in our furniture. We work with, for instance, finer 3 mm threads up to huge 20 mm threads!

! *Did you know that all our wicker outdoor furniture is braided manually? Usually, it takes our professional wicker workers several days to produce 1 piece of furniture!*

MILOU DINING



COCOON DINING



LIGHT WEIGHT CONCRETE

Light Weight Concrete is a fibre cement panel that is used for façade cladding. In most comparable table tops, a core material is used, not on the basis of cement, while the exterior material is based on cement. The core material expands in a way different from the way of the exterior material, as a result of which it may crack. Light Weight Concrete by Apple Bee doesn't need to cope with that, because the core and the exterior material consist of the same raw materials. They will expand or shrink in similar ways and thus not crack.

Our Light Weight Concrete is glass-fibre reinforced concrete. The mineral resources of concrete, in combination with the glass-fibre make the material extremely strong. LWC will not be affected by wind and rain and can even handle cold conditions; the material has been tested at temperatures of even -15 degrees Celsius! This material can be found in our coffee tables and dining tables. Such a table looks utterly robust, but is much lighter than concrete. This is quite convenient if you like to change the setup of your garden or wish to store your outdoor furniture during winter!

! Did you know that Light Weight Concrete 100% is not capillary? This implies that moist or dirt cannot penetrate the material, so you could even let it float in a ditch for as long as you like.

PEBBLE BEACH CONCRETE





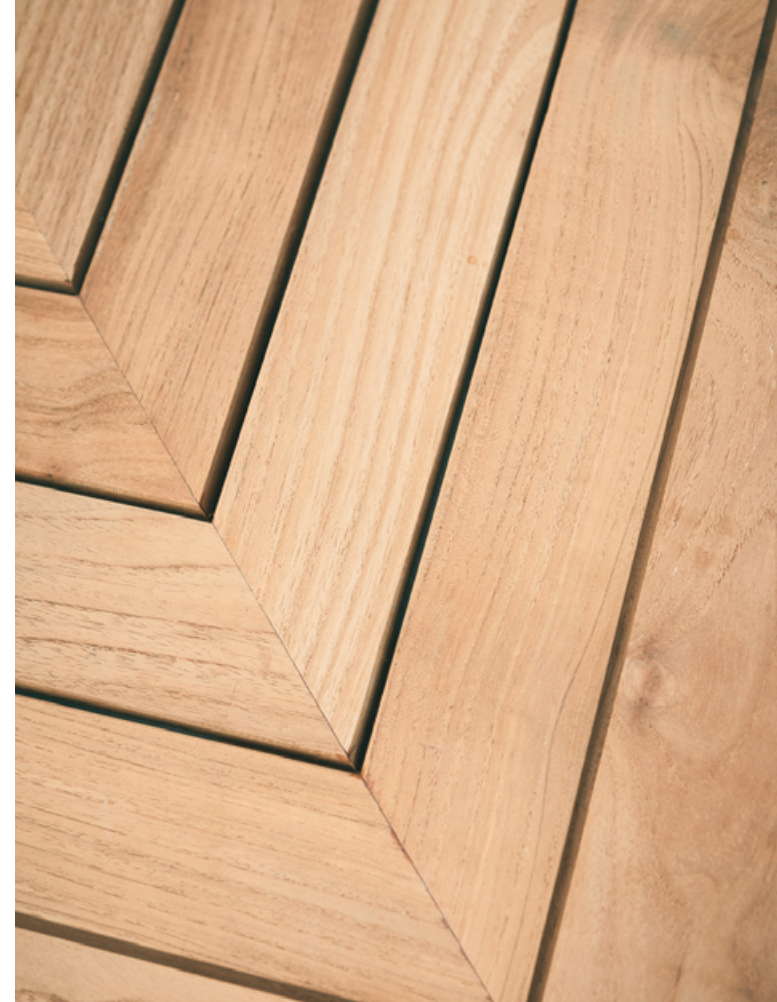
ROPE

It was obviously already mentioned for the 2020 trends; rope, which has become an integrated part of today's gardens. As the name suggests, the outdoor furniture has been made of rope that was developed especially for outdoor use. The rope that is used for outdoor furniture by Apple Bee, is made of olefin fibre with a PVC inner core. This inner core is strengthening the rope, which limits the stretching. When you sit down in your chair or sofa made of rope, you are immediately supported by the rope!

Rope being so extremely strong, maintenance-friendly and durable, makes it quite suitable for outdoor furniture. Also it dries quickly. On top of that, the Apple Bee rope is UV-resistant, so it will not fade as a result of direct sunlight!

! *Did you know that 126 metres of polyester rope is needed for 1 Jakarta dining arm chair?*

JAKARTA DINING



ALUMINIUM

Aluminium is the most recently discovered metal to be used in daily life. This is because aluminium does not appear in pure form in nature, but always in compound with other substances. Therefore, aluminium used to be very expensive, even more expensive than silver or gold. Emperor Napoleon was really fascinated by the silver-coloured 'metal' and got it as a present in the form of tableware. The emperor found this material so exceptional that only the most important guests were allowed to use this tableware: the other guests were to use the 'ordinary' gold plates.

Later, an easier way was discovered to produce aluminium. As a result, aluminium became increasingly cheaper and more items were made from it. Aluminium is very light-weight and also rustproof, which makes it perfect for outdoor furniture. The material is often applied in combination with other materials, such as wicker, teakwood and rope.

! *Did you know that all our aluminium is powder-coated to give it the desired colour? In contrast to wet painting, no solvents need to be added in this instance. Furthermore, the residual powder can easily be reused. The powder-coating creates a layer that protects the material against weather influences for a very long time.*

CONDOR DINING





CUSHIONS

Of course, your outdoor furniture is not complete without garden cushions! At Apple Bee, our cushions come in two different qualities; the standard and the BEE WETT® cushions. Both cushions are quite comfortable, but the BEE WETT® cushions offer more ease of use and are weather-resistant.

Our cushion covers are made of 100% Olefin. Olefin was first manufactured in Italy in 1957. A talented chemist was the first to compound the olefin fibres. The production of the fabric is eco-friendly: the production process of this fabric produces little waste and the fibre is 100% recyclable. The soft, light-weight fabric is perfect for outdoor use. The fabric is strong, wear-free and dirt repellent. Olefin is UV-resistant and colourfast, as a result of which the colours remain bright and beautiful for many years. And, equally important: it has the OEKO-TEX® certification and is flame retardant.

! Did you know that the fabric Olefin is capable of blocking more than 97% of the UV-radiation?



COCOON LOUNGE





**LUC - LOUNGE CHAIR HIGHBACK**

In the past, often a wooden bench and sometimes a pair of wicker chairs were put in the garden to 'lounge' on. Comfortable? Not necessarily. Fortunately, sufficient development has taken place. And mind you, this Luc lounge chair looks super comfy, doesn't it?!

**ROOTY - DINING BENCH**

Whoever believes that only chairs can be put around a dining table, is quite wrong! Previously it was a trend, but now it is commonplace: the dining bench. This Rooty dining bench not only makes the dining corner in your garden atmospheric, it also saves a lot of space.

**THROW PILLOW - FOREST BREEZE 45X45 CM**

Brighten up your lounge set with a nice set of cushions! These Forest Breeze cushions provide a bit of extra colour and also increase the comfort of your lounge set.

JAKARTA - DINING ARM CHAIR

Not only are the Jakarta dining chairs a feast for the eye, they are also very practical. The chairs are light-weight, stackable and thus easy to transport. Available in black, green, yellow and light-grey, you will always find one that perfectly suits you!

**TWIGGY - SIDE TABLE**

Are you looking for a durable side table that fits with any other piece of furniture? Then this table will be perfect! The entire Twiggy collection is made of unprocessed, natural teak branches, that were previously not used for the production of furniture. Disposal would be a waste; we give it a second life! :)

ZARA - DINING ARM CHAIR

The skilfully woven and knotted Biculair® threads give the Zara dining arm chair a playful and transparent effect. You could almost call it Macramé art! The Zara dining chair is stackable and therefore easy to carry and store.



WHY BEE WETT®?

Our furniture is composed of the best materials. This certainly applies to the cushions! Many of our collections include BEE WETT® cushions that, in addition to being very comfortable, are also weather-resistant. As the name suggests already: "our cushions may get wet", which we will be glad to elucidate!



NO MORE LUGGING

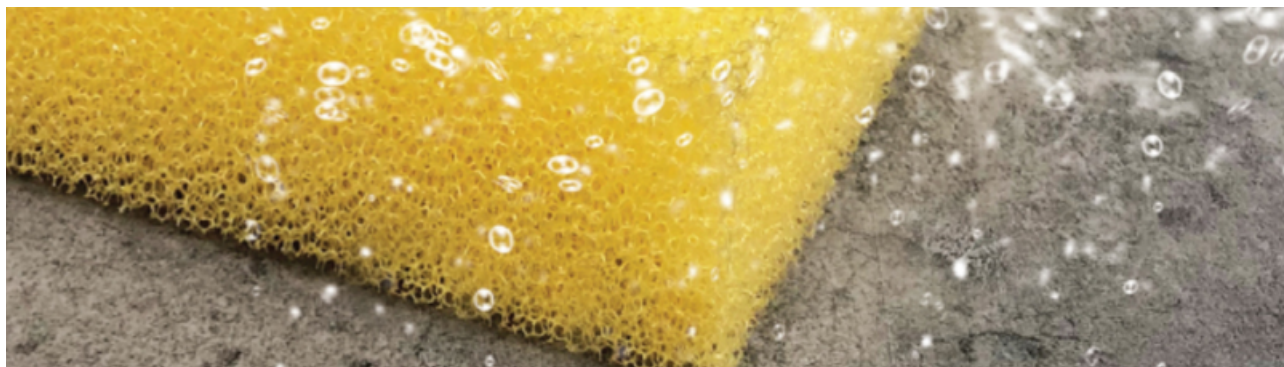
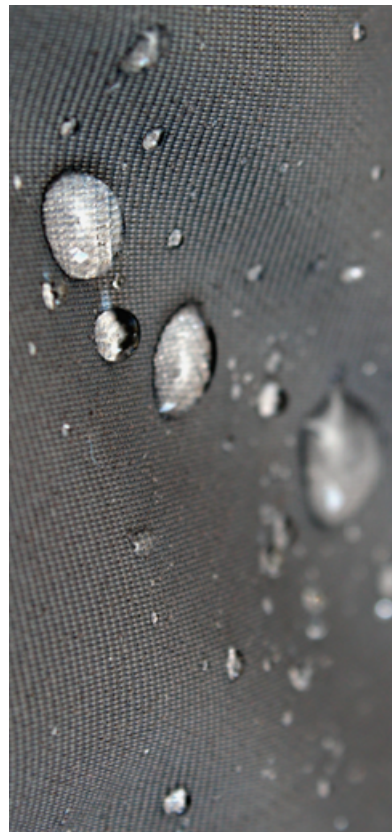
Have you had those moments? The shower alert on your mobile is sounding. In 10 minutes time there will be torrential rain and the cushions of your garden set are still outside. Come on, quickly put on those shoes and take your garden cushions inside! With the weather-resistant BEE WETT® cushions, you needn't worry about any rain and that saves you a lot of lugging to and fro with the cushions. BEE WETT® cushions will dry much more quickly than ordinary cushions. But how is that possible?

THE CUSHION COVERS

The covers around the BEE WETT® cushions are made of 100% Olefin. This fabric is excellently suitable for outdoor use. It is water repellent, wear-free, stretchable, colourfast, stain-resistant and on top, it is durable. In addition, it is light-weight and very soft. The perfect comfort for your garden!

TIP: Should you wish to wash your cushions once in a while, that's not a problem. The covers are easily detachable. You can put them in the washing machine, use a delicate fabrics programme (30 degrees max.) or lukewarm soapy water to wash them by hand. Never use corrosive, aggressive detergents and always rinse the cushion covers using plenty of clean water!

Do not put the cushion covers in the dryer and do not iron them. To get the covers as tight as possible around the filling, you can put the filling in the cover immediately after washing.



THE CUSHION FILLING

Our standard cushions contain standard foam. This filling provides wonderful comfort, but unfortunately, it is not water permeable. After a rain shower, the water will remain inside the cushions. Therefore, these cushions should be stored in a dry location, away from direct sunlight. This will prevent moist, or even mould from being created in the cushion.

The BEE WETT® cushions, however, contain quick dry foam. This material has a number of properties that make it perfect for outdoors. For instance, the foam is moisture regulating, will not rot and no mould will be formed. This is due to the open cell structure, processed in the foam, in combination with the open tissue at the bottom of the cushion, as a result of which (rain) water will easily flow through the cushion. This open cell structure ensures proper air circulation, making the cushion dry quickly.

YEARS OF RELISHING

Proper maintenance will ensure you to lengthen the lifespan of your cushions. Here are some tips from our cushion expert:

- Remove spilled fluids or substances immediately, so they cannot soak in. This can easily be done using a bit of detergent or diluted (!!!) kitchen grade vinegar.
- Brush any dirt from your cushion before it has a chance to nestle in the fabric tissue.
- If you will not be using your BEE WETT® cushions for a longer period of time, preferably store them indoors. This will prevent pollution of the cushion.
- Have you spilled some of your great (special) beer on your cushions? No worries! You can easily remove it using a bit of fluid detergent or diluted (!!!) kitchen grade vinegar.
- Having a nice old-school barbecue with real charcoal? A piece of charcoal that fell on your cushion, not a burning part of course (!), could cause nasty stains. The best thing to do in this case, is to remove the charcoal with a vacuum-cleaner and then clean it using fluid detergent.
- If a piece of chocolate fell on your cushion, you had best clean it with some gall soap. Wet the stain and rub the gall soap on top of it. Allow it to soak for a while. Subsequently rinse it with (cold) water. The same can be applied in case of fruit, ink, wine, grease and make-up stains.





ROBINSON LOUNGE





COOLING OFF IN THE GARDEN

Although the trend of having a bar set on the patio or balcony has existed in the U.S. for some time, also Europe recently discovered how great it can be to dine or have drinks at a bar table. Our Milou bar set is fitted with two multi-functional aluminium containers with lids. Great to use it for a plant, ice cubes or to serve your salads during the barbecue!

To give you a little idea in advance, below a recipe for a fresh salad can be found. Bon appetit!

INGREDIËNTEN

For the salad

- 1 green apple
- 1 large sack of lamb's lettuce
- 1/2 cucumber
- a small piece of brie
- a handful of dried cranberries
- a handful of mixed nuts

For the vinaigrette

- 3 tablespoons extra virgin olive oil
- 1 tablespoon white wine vinegar
- 1/2 tablespoon honey
- salt and pepper

HOW TO?

Wash the green apple, cucumber and lettuce, remove the core of the apple and cut the cucumber and apple into small pieces. Slice the brie. Put the lettuce in a large bowl. Disperse the apple, cucumber, brie, nuts and cranberries across the lettuce.

Then start with the vinaigrette. Use a high beaker or glass for this. Put all ingredients for the vinaigrette in the beaker and mix everything using a whisk. Season with some salt and pepper. Then disperse the vinaigrette across the salad and mix well.

Tip: if you prepare the salad in advance, you can store it in one of the aluminum trays of the Milou bar set. These simply can be put in the fridge with a lid. In that way you can directly sit down for dinner when the barbecue is lighted.

Sustainability has increasingly become a way of life. The waste-stream is ever-increasing. At Apple Bee, we like to go the extra mile and are working on sustainability and corporate social responsibility. Get inspired by these sustainable collections.

Over the last 20 years, during which we have been active, we have learned a lot about the outdoor furniture sector and industry. Every day, we are looking for new opportunities. And after a while we discovered that the branches of the teak tree were not used for manufacturing furniture. We considered this a waste and were keen to do something about it ... The branches were not used, because usually they were too short or not thick enough. We started experimenting, to be able to use these branches after all. This resulted in two wonderful sustainable collections. These are the Rooty and the Twiggy!





ROOTY DINING



ROOTY LOUNGE

The collection is attractively priced and in addition, it is unique. Various weather influences allow the branches to be 'more alive' than the normally used teakwood. It will cause more (hair)cracks to be created in the furniture. This is rather harmless and even provides the furniture with a unique, rustic look.



NEED OUR HELP?



We get huge amounts of questions about our outdoor furniture and materials. In order to help you, we have summarised the most frequently asked questions in this FAQ column. Good luck!

In June, we bought an Apple Bee lounge set, but now our dog has bitten one of the seat cushions. Can we order a new cover from you for the cushion?

In some cases, it is possible to order replacement covers or cushions. Since we are a wholesaler and work with dealers, you had best ask this question to the dealer you bought your furniture from. Please indicate which cushion is concerned and include a clear photo with your order. They will be able to help you further!

Where can I find an overview of the Apple Bee retailer?

Our retailers can be found on our website: <https://applebee.nl/en/retailers/>

By filling in your domicile or postcode, you can find the nearest Apple Bee dealer.

4 years ago I bought an Apple Bee lounge set, with BEE WETT® weather-resistant cushions. I am still quite happy with it! Today I took the cushions indoors, to store them in our attic. Can I wash the covers?

Certainly, you can wash the covers in the washing machine! Use a program for delicate fabrics (30 degrees maximum). You can also wash them by hand, in lukewarm soapy water. Never use corrosive, aggressive detergents. Rinse the cushion covers with plenty of clean water. In order to retain the water-repellent layer on the covers, you can add some Harmisol (or the like) to your last used rinsing water.

Do not put the covers in the dryer and do not iron them. To get the covers as tightly as possible around the filling, you can put the fillings back into the covers immediately after washing. In case of larger cushions, we recommend that you slightly fold them when you remove or apply the covers. This will prevent the zipper from tearing as a result of too much tension.



The cold days are coming soon and we've understood that it is better to store the lounge set indoors during the winter, but that it's not required. Our Apple Bee lounge set was made of wickerwork. What do you recommend for this set?

Our furniture is made of a wickerwork that is suitable for use outdoors throughout the year. Biculair® wickerwork is a durable rattan-imitation (HDPE) that is weather-resistant, colourfast and 100% recyclable. We recommend that you store the cushions indoors if they will not be used for a longer period of time, for they might become dirty. Should you have the opportunity to also store your outdoor furniture indoors, this is certainly recommended, because it will lengthen the lifespan of your set. The less dirt that is able to attach to your furniture, the better it is, of course.

If you do leave the furniture outside, then you can easily clean it in the spring, using some lukewarm water with mild soap and a soft brush. Properly rinse afterwards, using plenty of clean water.

Our Apple Bee teak lounge set has a warm-brown 'antique finish'. We would like to keep it in the original colour. What is the best way to do this?

For the maintenance of our teak furniture, a number of maintenance products were developed. For the 'antique finish', there is a 'Apple Bee Teak Colour Restore', which will ensure the furniture to retain its original warm-brown colour. The 'Apple Bee Teak Cleaner' can be used to clean the furniture. For an additional protection layer or maintenance of our naturel teak, the 'Apple Bee Teak Shield' is available. These products can be used immediately after purchase, if desired. You can order our maintenance products from the Apple Bee retailer nearby you.

Our lounge set is outside throughout the year. Is it correct that also the BEE WETT® cushions can be left outside all year round?

Our BEE WETT® cushions can be left outside all year. As it is, the cushions are made of quick dry foam, which is weather, moisture, and mould-resistant. Also, the foam will dry much more quickly than standard foam filling.

Despite the cushions being suitable to be left outside all year, they might of course become dirty as a result of rain, bird-droppings and the like. Therefore, we recommend to relocate the cushions to indoors in the autumn. This way, pollution and ring marks on your cushions can be prevented, while at the same time you lengthen the lifespan of your cushions!

Please note: unlike the BEE WETT® cushions, standard cushions **must** be protected against rain, so they must be stored!



Can I cover my lounge set in the winter, by use of a furniture cover?

That is possible, however, it is not recommendable. By using a cover over a longer period of time, there is a risk that the furniture is no longer able to "breathe", due to condensation. This will cause imprints and/or annoying (mould)stains on your outdoor furniture, that cannot be removed. Your Apple Bee outdoor furniture is sufficiently high-quality to be left outside uncovered. At the beginning of the season, just clean the furniture and you will be able to enjoy it to the max!

We recommend that you store your cushions indoors during the winter, to prevent them from becoming dirty. Should you have the possibility to store your outdoor furniture indoors, then we highly recommend this. A dry, frost-free location will always be beneficial to the lifespan of any furniture and cushion.

Always want to be aware of our latest developments, facts and more?



Follow us on

SOCIAL MEDIA



@applebeeoutdoorfurniture



facebook.com/applebeeoutdoorfurniture



linkedin.com/company/apple-bee-outdoor-furniture



pinterest.com/applebeeoutdoorfurniture

DON'T MISS NEXT ISSUE!

De Slof 18
5107 RJ Dongen
+31 (0)76 572 8000

WWW.APPLEBEE.NL