

KOMBI-INNENROSETTENSATZ

Edelstahl matt, Edelstahl poliert, Graphitschwarz,
Kaschmirgrau, Messing Optik, Chrom poliert, Nickel matt*

GRIFFWERK Kombi-Innenrosettensätze, geeignet für TITANO Kombi
SB_880/_882 und Schutzrosettengarnituren.

- Hochwertiger rostfreier Edelstahl 1.4301
- Verschraubung mit M5-Schrauben
- Kombi-Innenrosettensätze im eingebauten Zustand ohne sichtbare Schrauben
- Rosettenstärke 8mm
- Drückerführung für optimale Griffpositionierung in Unterkonstruktion integriert
- Verschiedene Designs, für ein einheitliches Erscheinungsbild zu Schraub oder Klipp Garnituren
- Für alle Griffe mit Drückeradapter Durchmesser von $\varnothing 16\text{mm}$ geeignet

INNER SECURITY ROSE SET

stainless steel matt, stainless steel polished,
graphite black, cashmere grey, brass optics,
chrome polished, nickel matt*

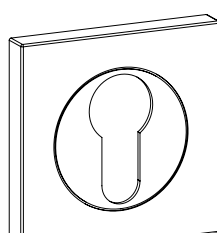
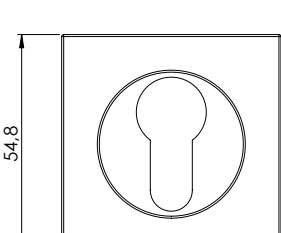
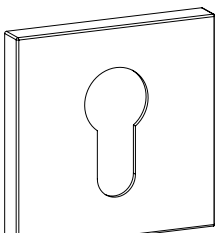
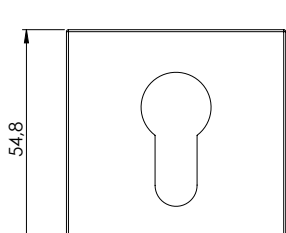
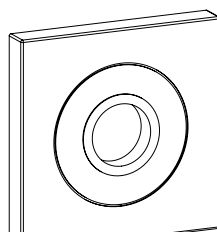
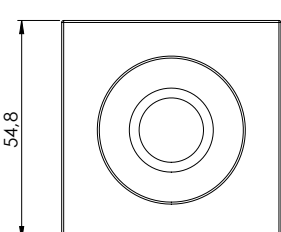
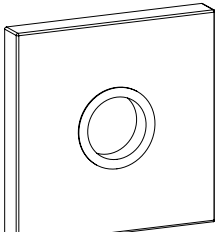
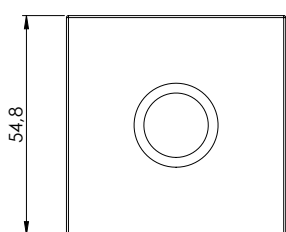
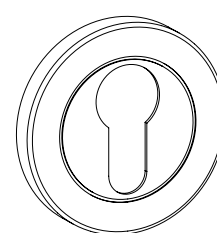
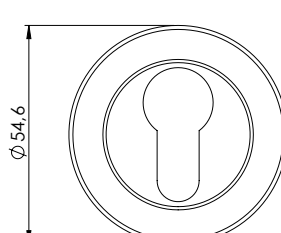
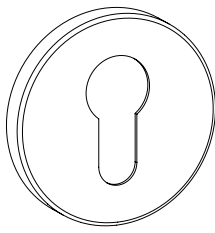
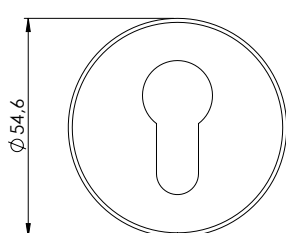
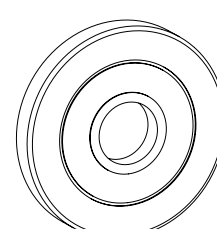
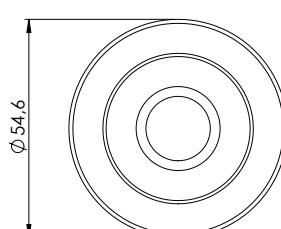
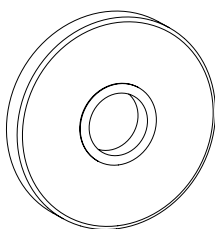
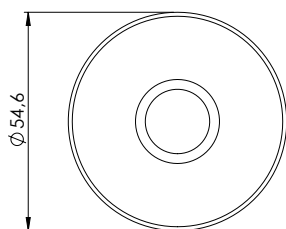
GRIFFWERK Combination inner rose sets, suitable for
TITANO Kombi SB_880/_882 and protection rose sets.

- High-quality stainless steel 1.4301
- Screw connection with M5 screws
- Combination inner rose sets in installed condition without visible screws
- Rosette thickness 8mm
- Handle guide integrated in substructure for optimum handle positioning
- Different designs, for a uniform appearance to screw or clip door sets
- Suitable for all handles with handle adapter diameter $\varnothing 16\text{mm}$



ohne Zierring
without decorative ring

mit Zierring
with decorative ring



*Nicht alle Oberflächen sind in allen Varianten verfügbar! Für Details, siehe Preisliste

*Not all surfaces are available in all variants! For details, see price list